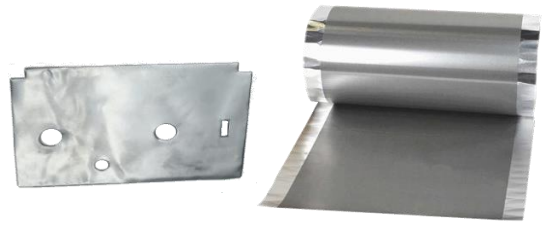


LST-GBA-900-AL

Graphite Bond Aluminum

DESCRIPTION

LST-GBA-900-AL is a Graphite Bond with Aluminum material. It has high thermal conductivity and excellent flexibility. It is a product made from carbon fiber and carbon nano-powder synthesized by a special process bonded with Aluminum. It can be die-cut into any shapes and sizes to provide excellent thermal heat management solution for limited space application.



Graphite Bond Aluminum Material

Features

- Thermal Conductivity 500 W/m-K
- Good EMI Shielding and Absorbing
- Reliable Temperature -40°C to 400°C
- RoHS Compliant and UL94V0 Rated
- Offered Customized Combination Thickness

Benefits

- Die-cut into customizable shapes
- Adhesive-backed for peel-and-stick process
- Can laminated with plastic, metal or foam
- Reduce skin temperature and eliminate "hot spot"
- Can replace grease, eliminate fan and heat pipe.

LST-GBA-900-AL Characteristics

Aluminum	Aluminum	Aluminum
Color	Dark Gray	Nature
Thickness (mm)	0.900	0.018
Operating Temperature (°C)	-40 ~ +400	
Thermal Conductivity (X-Y Direction), (W/m-K)	500	250
Thermal Conductivity (Z Direction), (W/m-K)	15	-
Typical Electrical Resistivity (Thickness) ($\mu\Omega$ m)	> 16000	-
Typical Electrical Resistivity (In-Plane) ($\mu\Omega$ m)	10	-
RoHS Compliant	Yes	

Part-Order Ordering System : LST-GBA-900-P10 G A10-AL-A10

① ② ③ ④

① **P10** : P = PET (Not To Remove)
10 = Thk 10 or 30u

② **G** : Graphite Material Composite
Position

③ **A10** : A = Adhesive
10 = Thk 10 or 30u

AL : Aluminum Foil Bond

④ **A10** : A = Adhesive
10 = Thk 10 or 30u

Note: Above properties listed information are typical or representative only.

GRAPHITE BOND COPPER MATERIAL CONFIGURATIONS AVAILABLE:

Structure		GTM Bond	Adhesive Type				Laminated Type (Insulation & Adhesive)			
Layer	Type		Non AC	Single AC	Double AC		P30-A30	P30-A10	P10-A30	P10-A10
I	Liner				Release	Release	Laminated Insulation (Polyester Tape/Insulative Adhesion Tape) (Do Not Remove)			
II	Front Surface				10u	30u				
III	Graphite	Graphite Thermal Material 130u (0.130mm)								
IV	Bond Surface	Bonding Insulative Thickness = 10u								
V	Bond Material	BM Thickness = Aluminum (AL) 0.018mm or As Required								
VI	Rear Surface		30u	10u	30u	10u	30u	10u	30u	10u
VII	Release Liner		Yes	Yes	Yes	Yes	Yes	Yes	Yes	Yes
Total Structure Layer		3	5	5	7	7	7	7	7	7
Total Thickness		1000u + BM	1030u + BM	1010u + BM	1040u + BM	1040u + BM	1060u + BM	1040u + BM	1040u + BM	1020u + BM
Heat resistance		100 °C	100 °C	100 °C	100 °C	100 °C	100 °C	100 °C	100 °C	100 °C

NOTICE: information contained herein are based on our best knowledge and accurate. However, before using, user shall determine, the suitability of the product for its intended use, and the user assumes all risks and liability whatsoever in connection therewith.

LISAT

2870 Scott Street, Suite 101 Vista, CA 92081, U.S.A.

Tel : (1)-760-5981066 / Fax : (1)-760-5982871 / Email : alan@lisat.net / Website : www.lisat.net